

April 27, 2017

Office of Hopkins County Judge
The Honorable Robert Newsom
Post Office box 288
Sulphur Springs, Texas 75483

Farmers Electric Cooperative Member: Blake Bain
Service Order Number: 1507001033

Dear Judge Newsom,

Farmers Electric Cooperative, Inc. is requesting permission to re-route existing electrical power distribution facilities across CR 2310, which is located approximately 1707 feet east of county road 2313, in Hopkins County, Texas.

Site location map and construction sketches are enclosed. The construction sketch details the proposed work. All road crossing will have a minimum vertical clearance of 22 feet.

If you have any questions, please contact field engineering representative Matt Walker, 903-441-1368.

Sincerely,
Matt Walker

Engineering Assistant
mwalker@farmerselectric.coop

Enclosures

Submitted by:
Tricia Griffin
Field Engineering Coordinator
Office 903-453-0563 Fax 903-453-0663
tgriffin@farmerselectric.coop



0.1

S/O 1507001033
BLAKE BAIN
POLE#064444

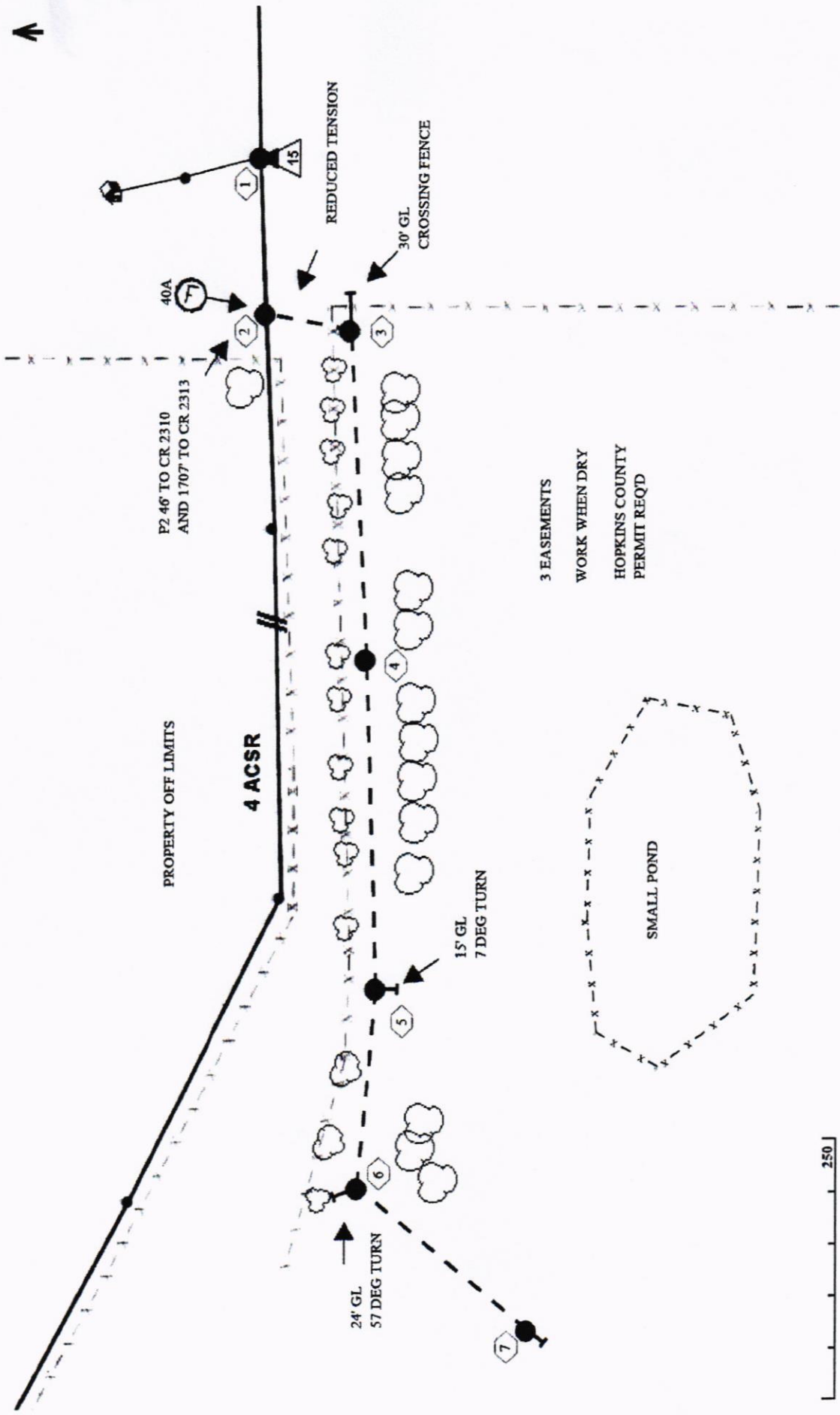


County Road 2310

County Road 2310

HOPKINS

County Road 2313



250